

## **Steps in the Adoption Process**

1. Assessment

2. Adjudication

3. Determination

The following three flowcharts give you a step-by-step guide to the adoption process in Ireland. We provide a glossary for reference, as several terms are abbreviated in the charts. Also, some terms we have to use are quite formal, so we have explained them in the glossary for clarity.

We provide a colour key to show which person or agency is responsible for particular actions. We hope you find this helpful.

## Glossary:



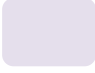

Abbreviations:

<b>AAI</b>	The Adoption Authority of Ireland
<b>AAI Board</b>	The board of the Adoption Authority of Ireland who adjudicate on adoption matters where necessary
<b>AAI ICA</b>	The Intercountry Adoption Unit within the AAI who administer the intercountry adoption process
<b>AAI DOM</b>	The Domestic Adoption Unit within the AAI who administer the domestic adoption process
<b>AAI SW</b>	The social work team within the Adoption Authority of Ireland
<b>PACT</b>	An adoption agency accredited by the AAI to carry out assessments for prospective adoptive parents
<b>Tusla</b>	Child and Family Agency, carries out assessments for prospective adoptive parents

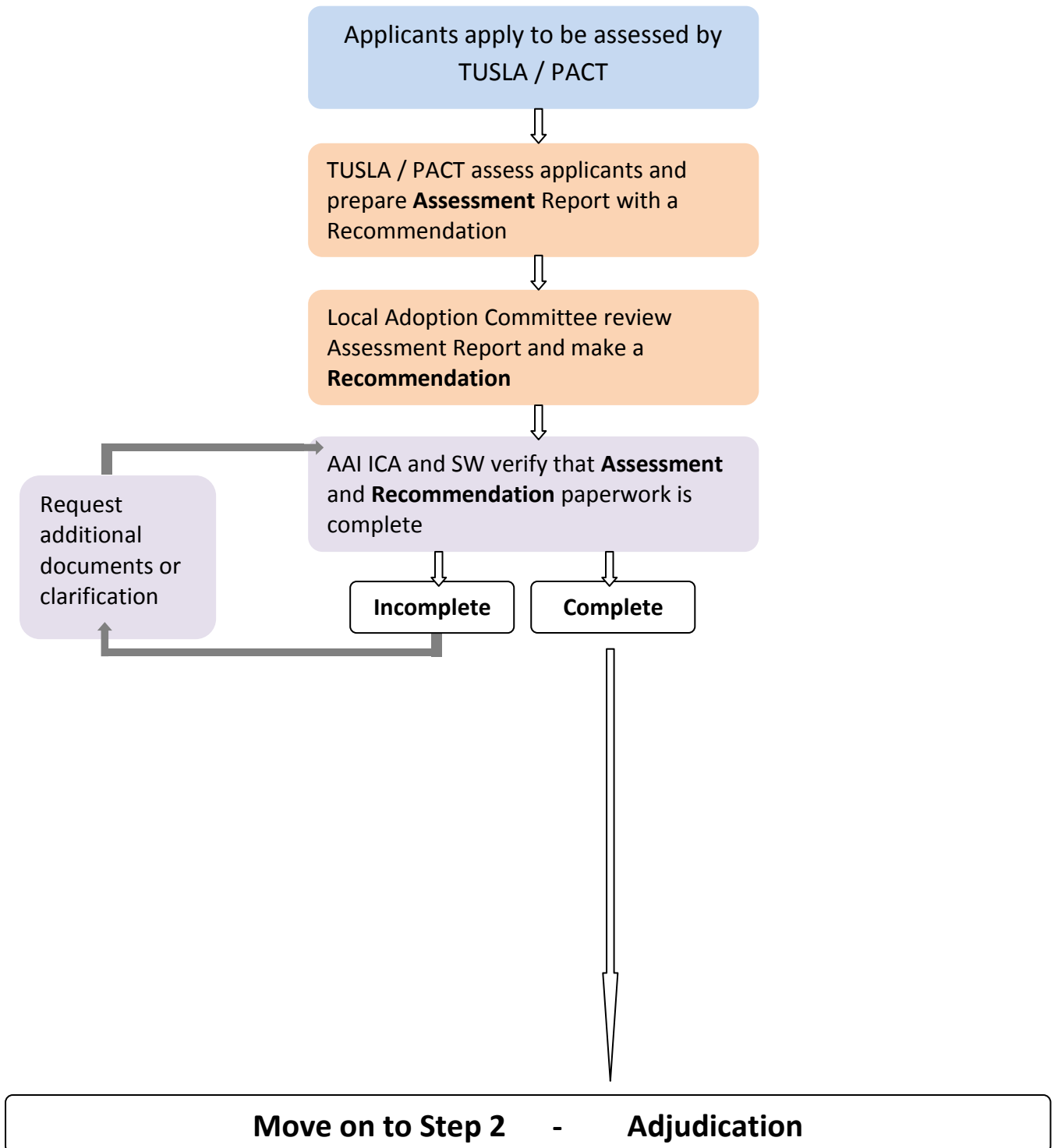
Terms:

<b>Adjudication:</b>	Examination and assessment of all the information supplied by the applicants, assessment agency, social workers, and so on.
<b>Determination:</b>	The decision of the Board or the Intercountry Adoption Unit whether or not to issue a Declaration of Eligibility and Suitability
<b>Minded to decline</b>	If the Board are 'minded to decline', it means they are not satisfied to let the application proceed without further information from the applicants.

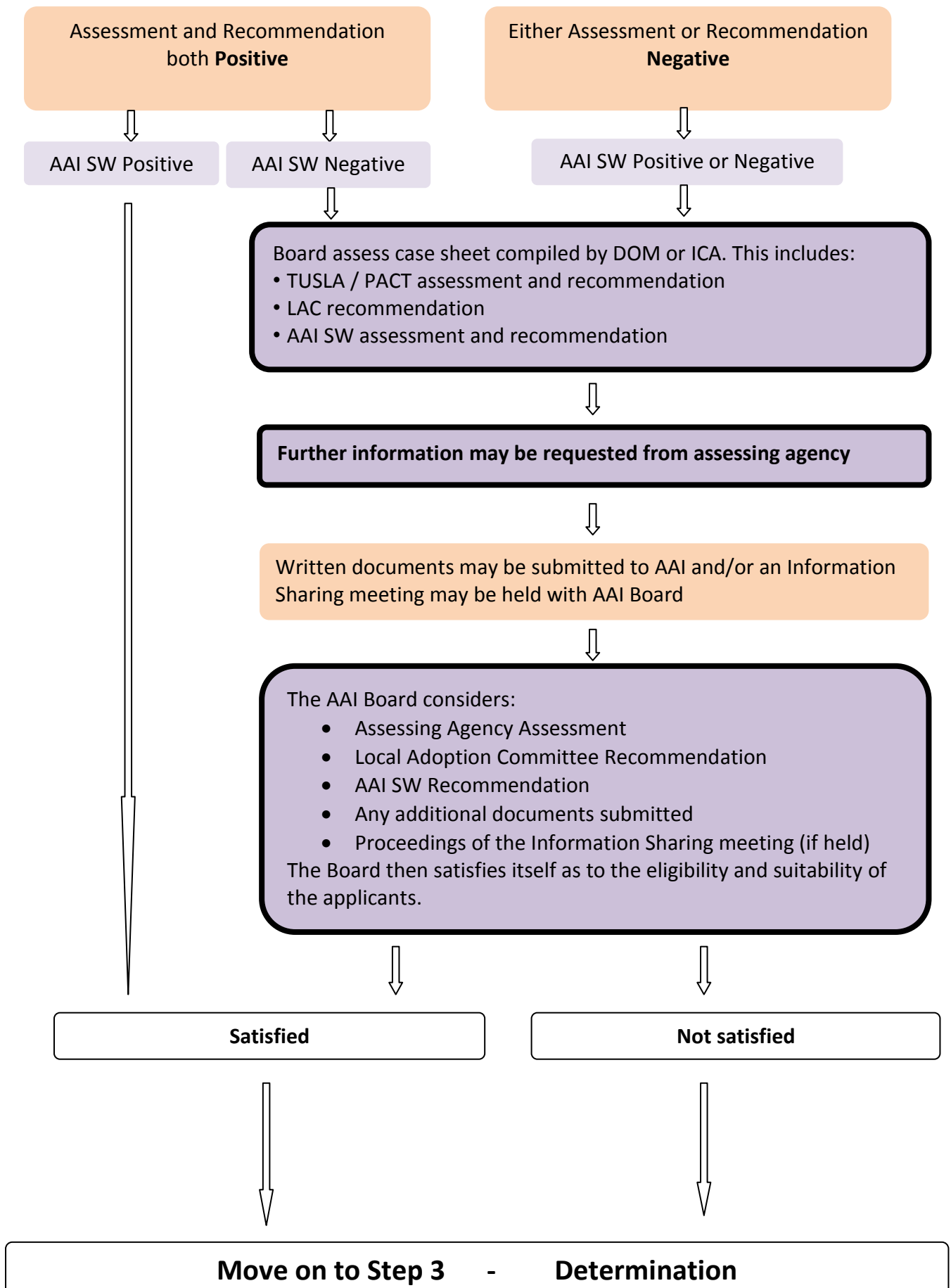
## Flow Chart Key

	=	<b>Applicants</b>
	=	<b>Assessing Agency / Local Adoption Committee</b>
	=	<b>AAI ICA</b>
	=	<b>AAI Board</b>

# 1. Assessment



## 2. Adjudication



### 3. Determination

